



Celebrating 36 years of service!

2022

Statement of Qualifications

TABLE OF CONTENTS

STATEMENT OF QUALIFICATIONS

Civil Engineers
Surveyors

EXECUTIVE SUMMARY

PROJECTS

PUBLIC WORKS

COMMERCIAL/INDUSTRIAL/INSTITUTIONAL

APARTMENTS

SURVEYING

SUBDIVISIONS

APPROACH & SERVICES

PERSONNEL

RESUMES

ORGANIZATIONAL CHART

REFERENCES

CONCLUSION

Jorgensen + Associates has provided Engineering and Surveying services for Northwest Arkansas for 36 years; we are both proud of and grateful for the opportunity to provide such a diversity of experience to Northwest Arkansas.

While the bulk of our work is for private developments, we feel that each project is a partnership with each City as we aim to deliver public infrastructure to better serve this growing area. Our firm is well diversified and can utilize our 36 years of experience to deliver plans to ensure each project's success; whether its a tricky intersection improvement that calls for a roundabout, or unique storm water runoff needs, our firm can and will deliver for our clients.

Northwest Arkansas is an environment that we take pride in promoting, preserving, and enhancing. Our close relationship with the local municipalities and governments allows us to anticipate the County's or City's vision for proposed projects, and we utilize this in our planning and design process.

And as a smaller firm, we have a personal stake in our final product and therefore take a personal interest in each of our projects. With experienced survey crews, inspectors, and approachable project engineers, we can respond quickly to survey/construction stakeout needs and in-field project management. Having worked this way for the last 36 years, we have fine-tuned our philosophy and approach to our client's projects, ensuring that we achieve our client's goals every time.

We offer expertise in Civil Engineering and Surveying, including:

SERVICES

- Public Works Projects
- Land Development
- Drainage Design + Analysis
- Street Design + Improvements
- NPDES + Storm Water Management
- Low Impact Developments
- ALTA Surveys
- Construction Stake Out
- Water + Sewer main extensions
- Student Housing
- Senior + Assisted Living
- Due Diligence
- Land Planning
- Entitlement Assistance
- Floodplain Management Services
- Roundabout Design

36 YEAR MILESTONES

We have been very fortunate to have reached the following Milestones: Platted in excess of 200 Subdivisions, which consisted of over 7000 Platted Lots, 100 Miles of Streets, 100 Miles of Waterline, 100 Miles of Sewer Line, and Infrastructure cost in excess of \$100 Million. We have also performed numerous Surveys, Large Scale Developments, and Public Works Projects.

Having successfully completed so many projects in the area, our firm has the advantage of having a lot of the existing infrastructure compiled into our in-house system. We can quickly analyze and design projects allowing us the opportunity to further serve this great community that we call home.

PROJECTS - PUBLIC WORKS

RUPPLE ROAD EXTENSION FAYETTEVILLE, AR



PROJECT HIGHLIGHTS

- Over 400 Acres of Land Surveyed
- One of the City of Fayetteville's Longest Street Extensions
- Three Roundabouts
- 404 Permitting
- Hydraulic & Hydrology Analysis & Design
- Estimated Construction Cost of \$7 Million



Above Right
Plan View
Below
Roundabout After Opening

PROJECTS - PUBLIC WORKS

CLEVELAND & HALL PARKING LOT UNIVERSITY OF ARKANSAS



PROJECT HIGHLIGHTS

- Low Impact Development Approach
- Improved water quality
- Reduced urban heat island effect
- Enhanced Beauty and aquatic habitat



Above Left
Aerial View
Above Right
View from the Northeast
Below
Low Impact Features

PROJECTS - COMMERCIAL

ADVENTURE SUBARU
FAYETTEVILLE, AR

PROJECT HIGHLIGHTS

- One of the Largest Bioretention Facilities in the State
- One of the Only 3rd Party Tested Bioretention Facilities in the State
- Runoff Treatment Train of
 1. Above Ground Bioretention
 2. Standard Detention Basin
 3. Underground Detention Facility



Right
Raingarden Pictures
Above Right
Pond
Above
Aerial Post Construction





PROJECTS - MIXED USE DEVELOPMENT

UPTOWN
FAYETTEVILLE, AR

Far Left
Sidewalk
Left
Bike Racks overlook buildings
Below Left
Streetscape



PROJECT HIGHLIGHTS

- • 14 acre site • 300 Units (400+ Beds)
- 22,000 sq. ft. of Club & Retail Space
- 550 parking spaces
- Green Street w/ Bike Lane
- Organic & Effective Vehicular, Pedestrian & Bicycle Interaction
- Multi-discipline Collaboration



PROJECTS - STUDENT HOUSING

BEECHWOOD VILLAGE & UNIVERSITY HOUSING (The Domain) FAYETTEVILLE, AR

PROJECT HIGHLIGHTS

- 30+ Acres
- 441 Units (1,324 Beds) • 320,000 sq. ft. of Apartment Space • 1,418 Parking Spaces • 14,000 sf clubhouses
- Major Utility Relocation along Beechwood to Improve Streetscape
- Trail Design & Incorporation through Site
- Dense Layout & Efficient Use of Property
- Multi-discipline Collaboration



PROJECTS - COMMERCIAL

**WHOLE FOODS SHOPPING CENTER
FAYETTEVILLE, AR**

PROJECT HIGHLIGHTS

- Repurposed 6.5 acres of commercial development land with Whole Foods being the anchor store
- 52,000 sq.ft. of commercial space with 310 parking spaces (some charging stations)
- Storm Water Quality Basin with ADS Environhood devices in storm system to help eliminate contaminants from runoff
- Extensive Grading and Retaining Walls required
- Arkansas State Highway permitting: Traffic Light, Driveway, and bore for Sewer Extension

Below Left
Entrance Picture

Below
Plan View



PROJECTS - STUDENT HOUSING

THE CARDINAL FAYETTEVILLE, AR

PROJECT HIGHLIGHTS

- 470 Beds
- 2.11 Acres
- Underground Detention
- Major Utility Relocation
- Water + Sewer Extension



Above Right
View from Center & Duncan
Below Right
View from Center Street
Above
Sketch from Center & Duncan



PROJECTS - SCHOOLS

THE NEW SCHOOL FAYETTEVILLE, AR



PROJECT HIGHLIGHTS

- Includes Pre-K, Elementary, Middle & High Schools
- Phased Gymnasium
- Difficult Task of Working around Existing Infrastructure, Students & an Active & Dynamic School
- Playground Design
- 1,000 SF Bioretention Facility



Below Right

Aerial View

Below Left

Perspective of Central Alley

Right

Layout

PROJECTS - SURVEYING

NUMEROUS SURVEYING PROJECTS

NORTHWEST & CENTRAL ARKANSAS

HILIGHTED PROJECTS

- Structure Location for City of Fayetteville Sewage Plant
- Steel & Skelton - 180 acres
- Sundowner Ranch - 350 acres
- Sunray Services - 1,800 acres
- Gulley Park - City of Fayetteville
- Numerous Individual & Boundary Surveys
- Razorback Stadium Remodel

Right

Jean Tyson Child Development Center

Bottom Right

Hillside Auditorium

Below

Pi Beta Phi Gate



All clients who come to Jorgensen + Associates have a project that we highly value and place as a priority. Some projects are relatively straightforward, while other projects present a multitude of challenges. The level of performance received by any client can be directly related to the engineering + surveying staff assigned to their project and by the firm's



management philosophy. Our staff has a combined experience of more than 50 years, and we have built upon this compilation of knowledge and experience to serve our clients. We are always approachable, taking our client's interests and needs into consideration and action.

Typically, we work within the traditional approach to facilities planning + construction, also known as "Design – Bid – Build" (DBB). In this approach, the owner hires the engineer to design the facility. The engineer, working with the Owner, develops the plans and specifications using budget pricing. Following completion of the design and initial permitting, bids are received from qualified contractors. The owner then chooses a contractor to build the facility and signs a contract with them. The engineer assists the Owner in the management of the construction; the Owner operates with two contracts: one with the engineer and one with the contractor. These

contracts can be any of several types; including fixed bid, cost plus, etc.

On each project, our design team consists of our field survey crews, the engineering technicians, project engineer, CAD Technicians and office support. On every project, we provide creativity, experience, and flexibility to produce the final solution. We gather the facts, data, and the client's vision to begin to develop two or three alternatives. Using input from the client and taking into consideration all facets of the problem, we develop the most cost effective and "best practical" solution. We value-engineer our projects to provide the most cost-effective solution to the problem. Having been in business for so long, we have accumulated all the necessary technology to bring our products to the forefront of the competition and we continually stay ahead of the curve. We employ this technology to produce precise boundaries and construction plans, which prevent costly mistakes and lost time. In addition, we provide engineering plans and specifications in a timely manner to enable our clients to meet construction deadlines.



APPROACH & SERVICES

Jorgensen + Associates offers a variety of services, all structured to bring your project to a successful completion. Services include, but are not limited to:

- **PRE-DESIGN SERVICES:** We are available to assist you in locating + acquiring property for your project, analysis of your proposed site, and surveys of the property. During this phase, we will also assist you in determining the required utilities and infrastructure for your project, as well as the regulations for local zoning and planning authorities. Upon determining these preliminary necessities, we will provide a preliminary cost estimate for the proposed improvements required to complete your project. We can also develop preliminary site sketches to assist you in formulating ideas for the layout of the project. We are well versed in the developmental process and we can assist our clients to achieve their goals through various means: subdivision of land, rezoning, re-platting, PZD's, PUD's, Large Scale Developments, commercial and industrial expansion and or development, lot splits, lot line adjustments, waterline extensions, sewer line extensions, street improvements and extensions, easements and rights-of-way acquisition or vacation, all within a reasonable timeline.

- **PERMITTING DOCUMENTS:** These consist of forms, drawings, and other items required by regulatory agencies before construction permits can be issued for the projects. We will prepare the drawings and complete the forms, and inform you of all associated fees. We will submit these documents to the appropriate authorities, and revise them as required based on review comments we receive from them.

- **CONSTRUCTION DOCUMENTS:** We prepare custom plans, specifications, and other items that contractors can easily follow, ensuring that what our clients want and what we design gets built correctly. Having worked in the area for so long, we have a good reputation with many of the contractors and

have the foresight to precisely produce user-friendly documents and make ourselves readily available to assist in the construction process. Jorgensen + Associates will prepare these documents, submit them for the required permits, and revise the drawings based upon comments received from the various authorities. We will then make these documents available for our client and multiple contractors in bid preparation. During the construction process, we understand that design changes and change orders may occur and we seek these as a means to save our client money, these changes will be well documented and carried out appropriately.



- **BIDDING OR NEGOTIATING SERVICES:** By providing construction documents and specifications, along with specific instructions to bidders and bid forms, we can ensure contractors are bidding on equivalent items. We can also check contractors' credentials for you. Jorgensen + Associates can issue invitations to bidders, distribute bid documents, prepare any required addenda, receive and open the bids, and prepare tabulations of bids for our clients use in selecting a contractor(s) for the project.

APPROACH SERVICES

- CONSTRUCTION CONTRACT ADMINISTRATION SERVICES:

To help insure quality construction, it is critical to have an unbiased, experienced representative; we can provide a range of services to fill this need. We can review payment requests, so that our clients know that the products and services that they are paying for are sound, essential, and of high quality. These services can include construction field observation, bidding representation, preparation and distribution of supplemental documents, preparation and review of any required change orders, construction monitoring and construction cost accounting.

- POST-CONSTRUCTION SERVICES: Finalizing the project on time and ensuring that the end product is of high quality and ready for long term use is essential to a successful project, we can ensure that this mandatory step is carried out to our clients' satisfaction. This process includes, but is not limited to: preparation of "As-Built" record drawings, assistance with final inspection, punch-list preparation, assistance with contract closeout, and final recordation of all necessary documents.

SPECIFIC WORK INVOLVED IN EACH PROJECT INCLUDES THE FOLLOWING:

- 1) Conceptual Planning
- 2) Boundary Survey
- 3) Rezoning
- 4) Preliminary Cost Estimate
- 5) Topographic Survey
- 6) Street Route Location (including vertical/horizontal design)
- 7) Water + Sewer Design (including vertical/horizontal design)
- 8) Storm Drainage (hydraulic and hydrology/vertical + horizontal constraints/ detention requirements)
- 9) Erosion Control Plans
- 10) Permits from the Health Department, Highway Department, ADEQ
- 11) Administer bids and assist with Contractor selection
- 12) Provide Construction Stakeout
- 13) Provide Construction Inspection
- 14) Provide "As-Built" Plans
- 15) Project Close-Out.
- 16) Foundation Plans
- 17) Retaining Wall Design, Analysis, and Plans

PERSONNEL

THE TEAM

Over the past 36 years Jorgensen & Associates has put together an unmatched team. Some have been here for as many as 20 + years. Others were added in the last couple years to allow for new services and account for an additional workload. One thing we like to highlight is that our staff is heavy on Professional Engineers who work directly with our clients on their projects. This benefits our clients by having the staff member whom is working on our Clients project to have direct knowledge of the specifics of their design.

JORGENSEN + ASSOCIATES' TECHNICAL STAFF CURRENTLY INCLUDES:

- 6 registered Professional Engineers
- 1 registered Professional Land Surveyor
- 1 Engineer in Training
- 3 Engineering Technicians
- 2 Full-Time Survey Crews
- 2 Full-Time Inspectors
- 1 Secretary/Clerical

PERSONNEL AVAILABLE FOR ASSIGNMENT TO YOUR PROJECTS INCLUDE:

Justin Jorgensen, P.E. – Co-Owner in charge of project design and construction management.

Blake Jorgensen, P.E. – Co-Owner in charge of project design and construction management.

David L. Jorgensen, P.E., P.L.S. – Founder. Maintains roll in oversight of planning, engineering, and surveying.

Jared Inman, P.E. – Project Engineer in charge of project design and construction management.

Charles Zardin, P.E. – Project Engineer in charge of project design and construction management.

Dillon Bentley, P.E. – Project Engineer in charge of project design and construction management.

Bailey Pinto, E.I. – Project Engineer in charge of project design and construction management.

Paula McClane – Engineering Technician and survey data analyst

Joey Homway – Engineering Technician and survey data analyst

Brian Ramey – CAD Technician and survey data analyst

Dave Nicholas – Survey Crew + Inspector

Gary Jorgensen – Inspector

Van McClane – Survey Crew

Devin Mcgarrah – Survey Crew

Jill Jorgensen – Secretary/Clerical

PERSONNEL

JUSTIN L. JORGENSEN, P.E.



PRESENT POSITION

Owner-Principal Engineer

EDUCATION

B.S. in Civil Engineering, University of Arkansas, 2003

AREAS OF EXPERTISE

Subdivision layout, roadway design, drainage studies, and culvert design for residential + commercial developments.

Use of Civil 3D, PondPack, StormCAD, Flowmaster, and Culvertmaster.

Preparation of construction plan and specifications.

PROFESSIONAL REGISTRATION

Professional Engineer Arkansas #13637

Justin has worked at this firm part-time for the past 20 years and began full-time in 2003 when he received his B.S. in Civil Engineering from the University of Arkansas. While going to school, Mr. Jorgensen spent time working at Jorgensen + Associates learning to operate many of the programs listed above. He also gained valuable field experience, surveying and inspecting throughout high school. He currently serves as a Project Engineer doing design work that includes, but is not limited to: Subdivision Layout, Roadway Design, Hydraulic analysis, Detention Pond Design, SWPPP Production, Grading + Drainage, and Water + Sewer.

Some of these projects include: Prairie Meadows Phase I + II, a 225 lot subdivision in Prairie Grove with a construction cost of \$3,746,687. Stone Mountain Phase I, a 115 lot subdivision in Fayetteville with a construction cost of \$2,934,500. Summit Place Subdivision, a 50 lot subdivision in Fayetteville with a construction cost of \$1,174,000. Amber Jane Subdivision, a 22 lot subdivision in Fayetteville, with a construction cost of \$336,070. Whole Foods, Fayetteville.

Justin took the lead to design one of the first “Conservation Neighborhoods” in the area, this development incorporated Low Impact Development features such as engineered bio-swales, rain gardens, and retention ponds. This cluster development accomplished 45% greenspace yet had a higher density than 4 units per acres; green beltways connect the residents to pocket playfields, community gardens, and other community oriented activities.

PRESENT POSITION

Owner-Principal Engineer

EDUCATION

B.S. in Civil Engineering, University of Arkansas, 2004

AREAS OF EXPERTISE

Subdivision layout, roadway design, drainage studies, and culvert design for residential developments.

Use of Autodesk Land Desktop 2004, HEC-RAS software, PondPack, Stormcad, Flowmaster, and Culvertmaster.

Retaining Wall Design

Preparation of construction plan and specifications.

PROFESSIONAL REGISTRATION

Professional Engineer, Arkansas #13843

Certified Floodplain Manager # AR-10-00225

Blake has worked at this firm part time for the past 18 years and began full-time in 2004 when he received his B.S. in Civil Engineering from the University of Arkansas. He started off surveying back in 1999 where he gained valuable field experience in surveying, inspecting, and the construction process. While going to college, Mr. Jorgensen spent time working at Jorgensen + Associates learning to operate many of the programs listed above.

After completing his degree he moved to Denver Colorado and worked as an engineer at Mulhern MRE, Inc. At Mulhern he performed drainage studies, fire flow analysis + water distribution demand and other civil engineering disciplines. He moved back to Fayetteville to become a Project Engineer at Jorgensen + Associates in 2005.

A few notable projects include Central United Methodist Church, a complex development requiring retaining wall designs, unique storm water detention, and other aspects of a large scale development; Cobblestone Subdivision, Fayetteville, AR; Katherine's Place Large Scale Development; Culpepper Assisted Living Large Scale Development, Ruppel Road Extension, Cleveland + Hall L.I.D. Parking Lot (University of Arkansas), the Cardinal Student Housing Project, Hilton Garden Inn, The New School, Creekside Subdivision.

PERSONNEL

BLAKE E. JORGENSEN, P.E., C.F.M.



PRESENT POSITION

Founder: Professional Engineer+ Professional Land Surveyor.

PAST POSITION

Senior Design Engineer + Project Engineer for Environmental and Civil Engineering, Garver + Garver, Inc., Little Rock, Arkansas.

EDUCATION

B.S. in Civil Engineering, University of Arkansas, 1975

M.S. in Engineering, University of Arkansas, 1982.

AREAS OF EXPERTISE

- 1) Hydraulics
- 2) Pump Selection (type and size)
- 3) Piping System (hot, cold + steam)
- 4) Municipal + Industrial Water + Wastewater Treatment
- 5) Civil work (grading and drainage, roads, survey, concrete tank design, retaining walls)
- 6) Efficient and rapid production of construction plans + specifications

PROFESSIONAL AFFILIATIONS

American Society of Civil Engineers

National Society of Professional Engineers

Arkansas Society of Professional Engineers

Arkansas Academy of Civil Engineers, 1998

MILITARY SERVICE

Army (3 years). Attended Army School of Electronics, Served in Vietnam (1969-70).

Maintained microwave communications station.

Honorable Discharge 1971 at Rank E-5.

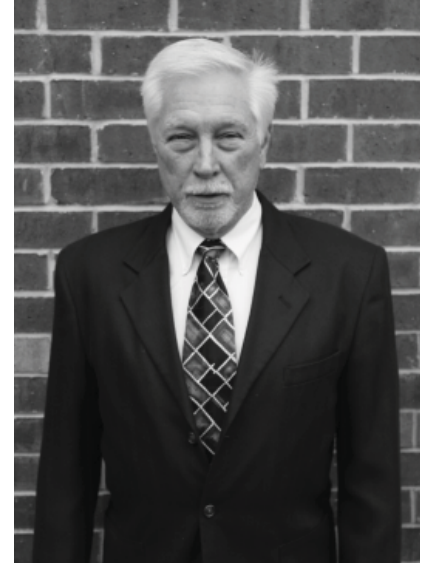
PROFESSIONAL REGISTRATION Professional Engineer, Arkansas, 1980 - Registration No. 5052

Professional Land Surveyor, 1987 - Registration No. 1118

Professional Engineer, Missouri, Registration No. 2008014534

PERSONNEL

DAVE L. JORGENSEN, P.E., P.L.S.



PERSONNEL

JARED S. INMAN, P.E.



PRESENT POSITION

Project Engineer

EDUCATION

B.S. in Civil Engineering, University of Arkansas, 2004

AREAS OF EXPERTISE

Subdivision layout, roadway design, drainage studies, and culvert design for residential + commercial developments.

Use of Civil 3D, HEC-RAS software, PondPack, StormCAD, Flowmaster, and Culvertmaster.

Preparation of construction plan and specifications.

PROFESSIONAL REGISTRATION

Professional Engineer Arkansas #13842, Oklahoma #24173,

Mr. Inman began work full-time in 2004 when he received his B.S. in Civil Engineering from the University of Arkansas. Mr. Inman gained valuable experience with “cradle to grave” design and construction in numerous areas, including but not limited to: Subdivision Layout, Roadway Design, Hydraulic analysis, Detention Pond Design, SWPPP Production, Grading + Drainage, and Water + Sewer.

In early 2009, Mr. Inman accepted a position with Garver LLC performing civil design with their Federal Division. Paired with a successful construction contractor teaming partner, Design-Build projects were the focus of the division. Constant communication/coordination with the contractor and Government agencies, which included USACE and NAVFAC, was critical in project design and management. Mr. Inman was in charge of civil design and/or complete project management on various projects ranging from typical horizontal design (street, drainage, and grading) to new buildings encompassing complete architectural, mechanical, electrical, plumbing, and fire protection coordination.

Some of these projects include: Air Depot Gate at Tinker AFB, Midwest City, OK, and a realignment of an existing base entrance that included a new visitor’s center and associated parking. The completed project was certified LEED Gold and is now utilized as the base’s main entrance. NAS Corpus Christi Goliad Out Lying Airfield, Goliad, TX, a new Aircraft Rescue and Fire Fighting (ARFF) facility that included extensive runway rehabilitation. The facility will be used for training purposes.

CHARLES ZARDIN, P.E.



PRESENT POSITION

Project Engineer

EDUCATION

B.S. in Civil Engineering, University of Arkansas 2012

AREAS OF EXPERTISE

Subdivision layout, roadway design, drainage studies, and culvert design for residential + commercial developments.

Use of Civil 3D, HEC-RAS software, PondPack, StormCAD, Flowmaster, and Culvertmaster.

Preparation of construction plan and specification.

PROFESSIONAL REGISTRATION

Professional Engineer #18060

Mr. Zardin started at Jorgensen + Associates in 2017. His previous engineering experience came from Harrison French & Associates, where he worked as a civil engineer intern/project designer. Charles currently develops complete sets of site development projects using AutoCAD Civil 3D including site geometry, utility, erosion and sediment control, grading/drainage plans, and details in accordance with client and municipality design standards.

DILLON BENTLEY, P.E.



PRESENT POSITION

Project Engineer

EDUCATION

B.S. in Civil Engineering, University of Arkansas 2014

AREAS OF EXPERTISE

Subdivision layout, roadway design, drainage studies, and culvert design for residential + commercial developments.

Use of Civil 3D, HEC-RAS software, PondPack, StormCAD, Flowmaster, and Culvertmaster.

Preparation of construction plan and specification.

PROFESSIONAL REGISTRATION

Professional Engineer #18891

Mr. Bentley started at Jorgensen + Associates in 2020. His previous engineering experience came from Engineering Services Incorporated, where he worked as a civil engineer intern/project designer. Dillon currently develops complete sets of site development projects using AutoCAD Civil 3D including site geometry, utility, erosion and sediment control, grading/drainage plans, and details in accordance with client and municipality design standards.

PERSONNEL

BAILEY PINTO, E.I.

PRESENT POSITION Engineer in Training

EXPERIENCE Bailey joined Jorgensen + Associates in 2021 immediately after graduating with a Bachelor of Science in Civil Engineering. Previous experience includes having worked at Dovetail Civil Design in Watkinsville, GA. He has experience in Civil 3D, StormCAD, PondPack, Flowmaster, and CulvertMaster. He specializes in creating Plans and Profiles for utilities, storm drain, roadway profiles, creating grading and drainage plans, and Hydraulic and Hydrology.

PAULA MCCLANE

PRESENT POSITION Engineering Technician

EXPERIENCE Graduated from Southern Technical College with a 4.0 in Computer Aided Drafting + Design in 1994. Began working for Milholland Company as an Engineering Technician in 1994. From 2004-2005, she was a CAD Technician at Presley-Brannan. In 2005, she went to work for H2 Engineering as Head of the CAD Department. May 2014, Paula started working at Jorgensen + Associates and specializes in Civil 3D as an Engineering Technician.

BRIAN J. RAMEY

PRESENT POSITION Engineering Technician

EXPERIENCE Brian joined Jorgensen + Associates in 1992, as member of the survey crew, quickly becoming crew chief. In 1997, Brian moved into the office, beginning work as an Engineering technician. Brian is currently our lead Engineering Technician and Survey data analyst. Having worked with Jorgensen + Associates for over 20 years, he has been a major asset and has had his hands in almost every project that has come through our doors.

JOEY HOMWAY

PRESENT POSITION Engineering Technician

EXPERIENCE Joey joined Jorgensen + Associates in 2021 coming from Blew & Associates, where he specialized in creating ALTA surveys. Joey now provides the same services, but has expanded his role as an engineering technician, where he utilizes Civil 3D to aid in drafting and other engineering elements.

VAN McCLANE

PRESENT POSITION Field Surveyor

EXPERIENCE Van joined Jorgensen + Associates in 2020 after graduating from the University of Arkansas with a degree in Soil Science. He utilizes our survey equipment to gather pertinent information for our designs, ATLA surveys, as well as construction stakeout.

DEVIN McGARRAH

PRESENT POSITION Field Surveyor

EXPERIENCE Devin joined Jorgensen + Associates in 2021. He utilizes our survey equipment to gather pertinent information for our designs, ATLA surveys, as well as construction stakeout.

GARY JORGENSEN

PRESENT POSITION Field Surveyor

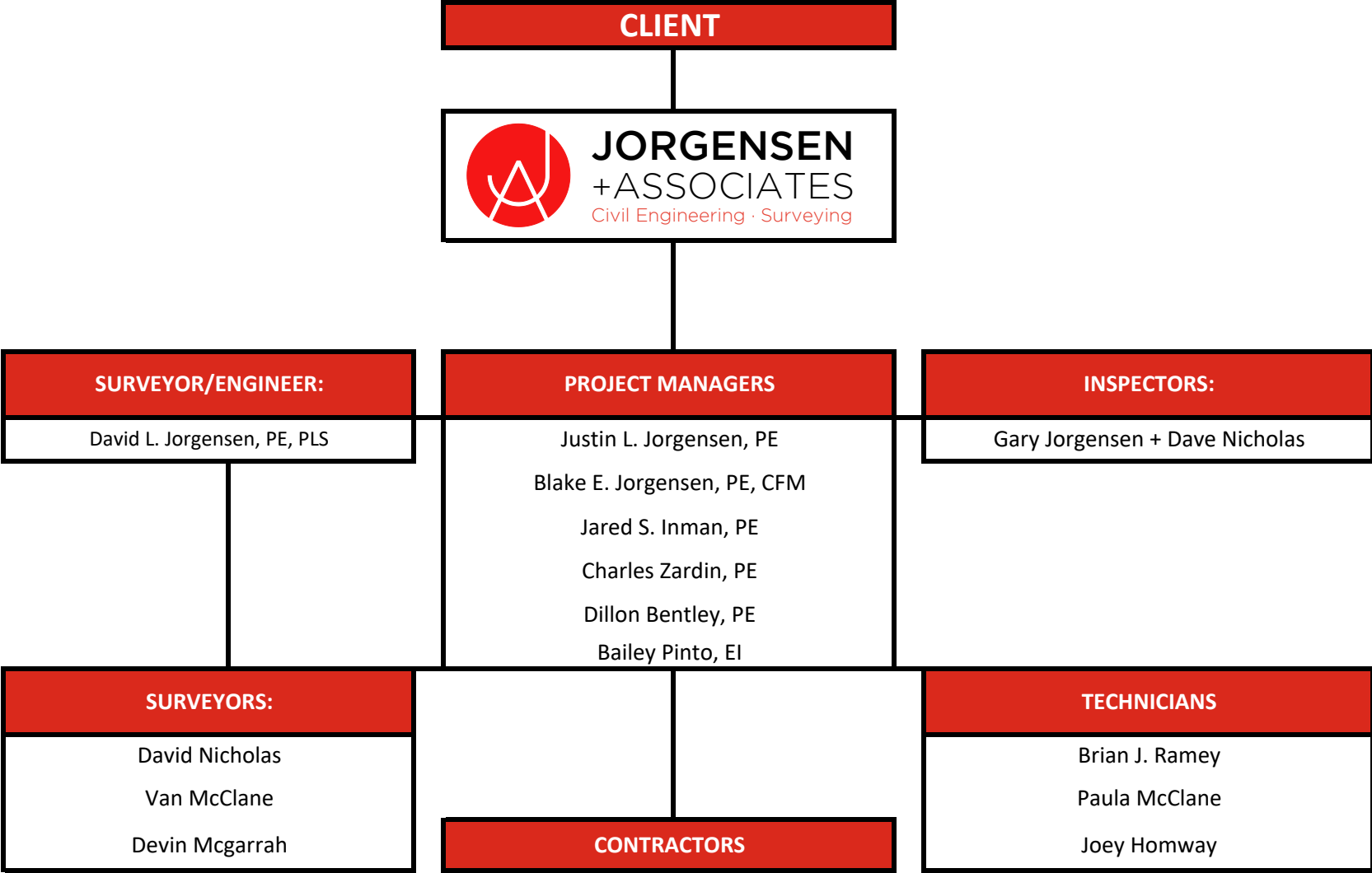
EXPERIENCE Gary joined Jorgensen + Associates in 2005. He spent the better part of the last 15 years utilizing our survey equipment to gather pertinent information for our designs, ATLA surveys, as well as construction stakeout. He has now transitioned into Field Inspection.

DAVE NICHOLAS

PRESENT POSITION Field Surveyor/Inspector

EXPERIENCE Dave joined Jorgensen + Associates in 1998. He spent the better part of the last 20 years utilizing our survey equipment to gather pertinent information for our designs, ATLA surveys, as well as construction stakeout. He has now transitioned into Field Inspection/Surveying.

ORGANIZATIONAL CHART



REFERENCES

City of Fayetteville
Chris Brown, P.E.
Matt Casey, P.E.
(479) 575-8206.

City of Prairie Grove
Larry Oelrich
(479) 846-5649

City of Elkins
Mayor Bruce Ledford
(479) 643-3400

City of Farmington
Mayor Ernie Penn
(479) 267-3865

City of Bentonville
Tyler Overstreet
(479) 271-3122

City of Rogers
Dylan Cobb, PE
(479) 621-1186

Sweetser Construction, Inc.
Billy Sweetser
(479) 443-3026

Tomlinson Asphalt
Mark Mahaffey
(479) 521-3179

City of Greenland
Carole Jones, PE
(479) 445-7110

Walker Construction
Carl Walker
(479) 795-0405

Benton County
Taylor Reamer, CFM
(479) 464-6166

Riverwood Homes
Mark Marquess
(479) 316-7440

PaveCon NW Arkansas
Ben Shankle
(479) 203-7550

Riggins Construction & Development
Kevin Riggins
(479) 582-9597

We have had the pleasure to work with a lot of valued clients, companies, and municipalities over the years. Feel free to contact any of the references to the left and inquire about our quality of service.

INTERESTED IN ROUNDABOUTS?
ASK US HOW WE CAN HELP.



Fayetteville, AR
15th + Beechwood Intersection Improvement

We hope that our Statement of Qualifications for Engineering + Land Surveying Services has been sufficient in supplying answers to questions that you may have and promotes our company as a potential candidate for your next project. If there are any questions that you may have, please don't hesitate to contact us at any time.

Contacts:

Blake Jorgensen or Justin Jorgensen

Email: blake@jorgensenassoc.com or justin@jorgensenassoc.com

Phone: (479) 442-9127

Visit us on the web for more information at www.jorgensenassoc.com

Thanks for your time and consideration;

A handwritten signature in black ink, appearing to be "Blake F. Jorgensen", written over a horizontal line.

Blake F. Jorgensen, P.E., CFM

A handwritten signature in black ink, appearing to be "Justin L. Jorgensen", written over a horizontal line.

Justin L. Jorgensen, P.E.